



CENSUS • RECENSEMENT

Census 2021 follow-up for Tk'emlúps te Secwépemc !

Starting now and through the summer you may see Statistics Canada staff on Tk'emlúps te Secwépemc Lands. The Census is Canada's storyteller. Every five years, data is collected about every household to understand how Canada is changing over time. The data collected is used for planning and policy development in many areas.

Tk'emlúps te Secwépemc Lands is its own *Census Subdivision*. That is great news for Ttes! That means we can use the census data to better understand the dynamics of those that live on Ttes Lands. Ttes can use census data to support our own decision-making on government services, and in negotiations with other governments.

When you do the census, you ensure that your situation is accounted for.

If you did not complete the Online questionnaire you received one of the following Indigenous Enumerators will be going door-to-door to help each household complete the Census Survey.

Enumerators will be wearing red vests and name tags, and are required to follow COVID-19 Safety Protocols:

- Two masks
- Social distancing
- Frequent hand sanitizing
- Not** allowed to enter your home



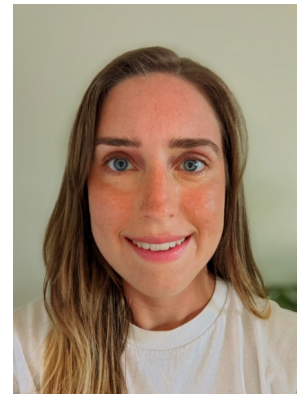
Jenny



Nikki .F.



Carolynne



Heidi



Nicki .W.

Simone



Crew Leader

Rae-Anne

Can be contacted at 250-574-6069 if you have questions.

